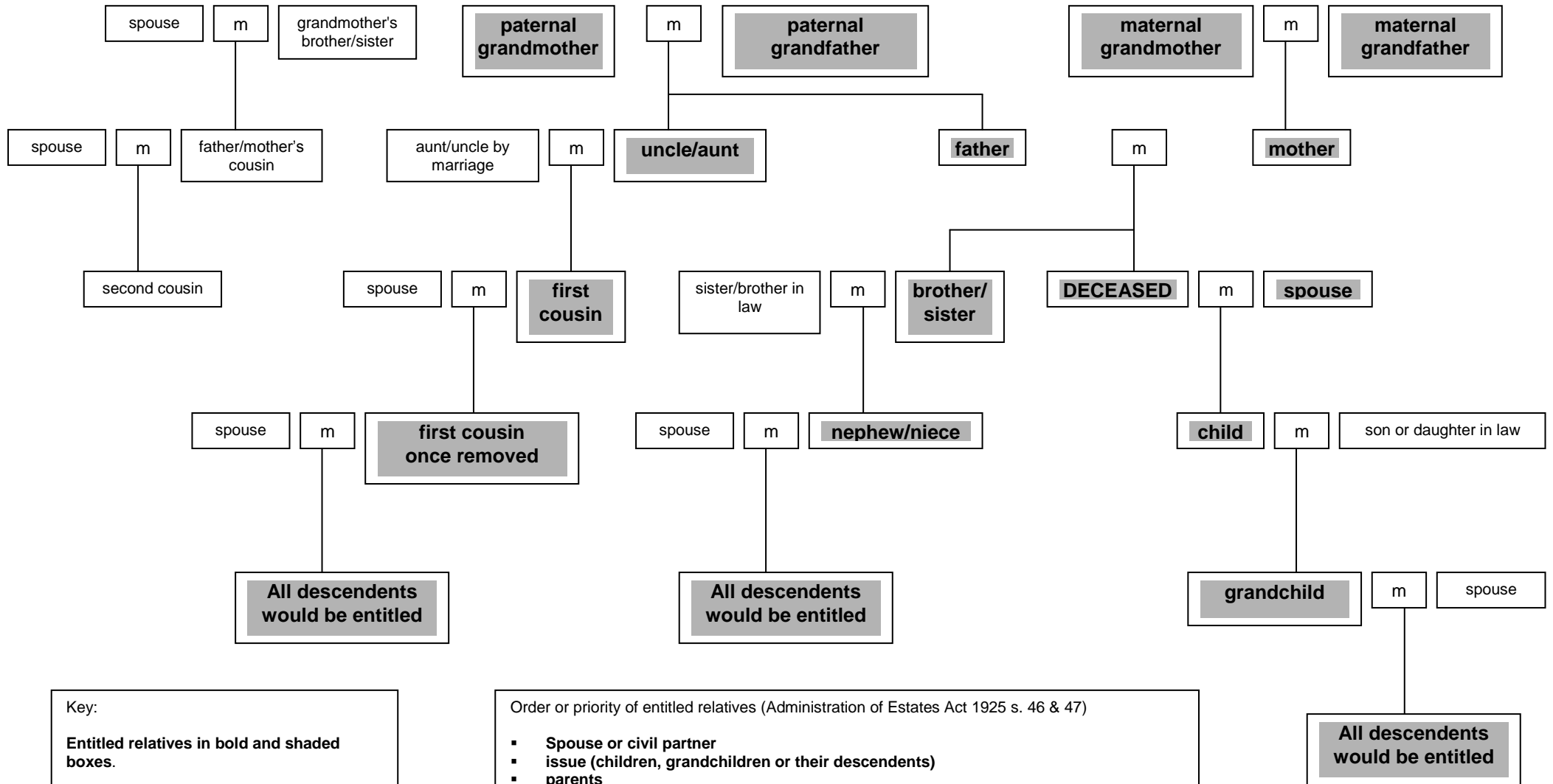


RELATIVES ENTITLED TO SHARE IN AN INTESTATE ESTATE



Key:
Entitled relatives in bold and shaded boxes.

- Order or priority of entitled relatives (Administration of Estates Act 1925 s. 46 & 47)
- Spouse or civil partner
 - issue (children, grandchildren or their descendants)
 - parents
 - brothers and sisters of the whole blood, or their issue
 - brothers and sisters of the half blood, or their issue
 - grandparents
 - uncles and aunts of the whole blood, or their issue (first cousins or their descendants)